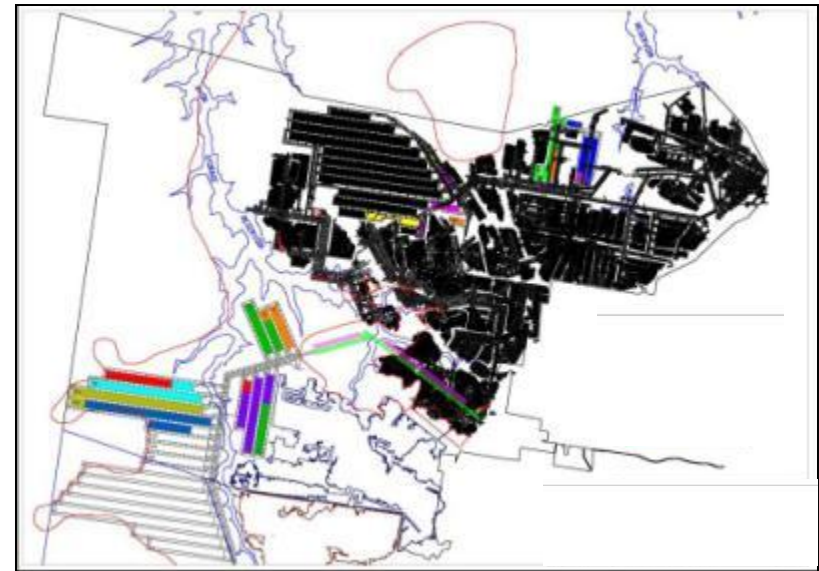


2 NRE WONGAWILLI COLLIERY

- Located in the Southern Coalfields of NSW
 - c.14km south-west of Wollongong
 - c.20km by road from Port Kembla Coal Terminal
- Consolidates 3 Collieries
 - Elouera Colliery (previously owned by BHP)
 - Avondale Colliery
 - Part of the Huntley Colliery
- Premium quality hard coking coal
- JORC reserves of 33 Mt and resources of 337 Mt
- ROM coal transported c.13 km via rail to the Port Kembla Coal Terminal
- Approximately A\$120 million invested (to March 2010) with plans to invest a further A\$175 million to March 2013

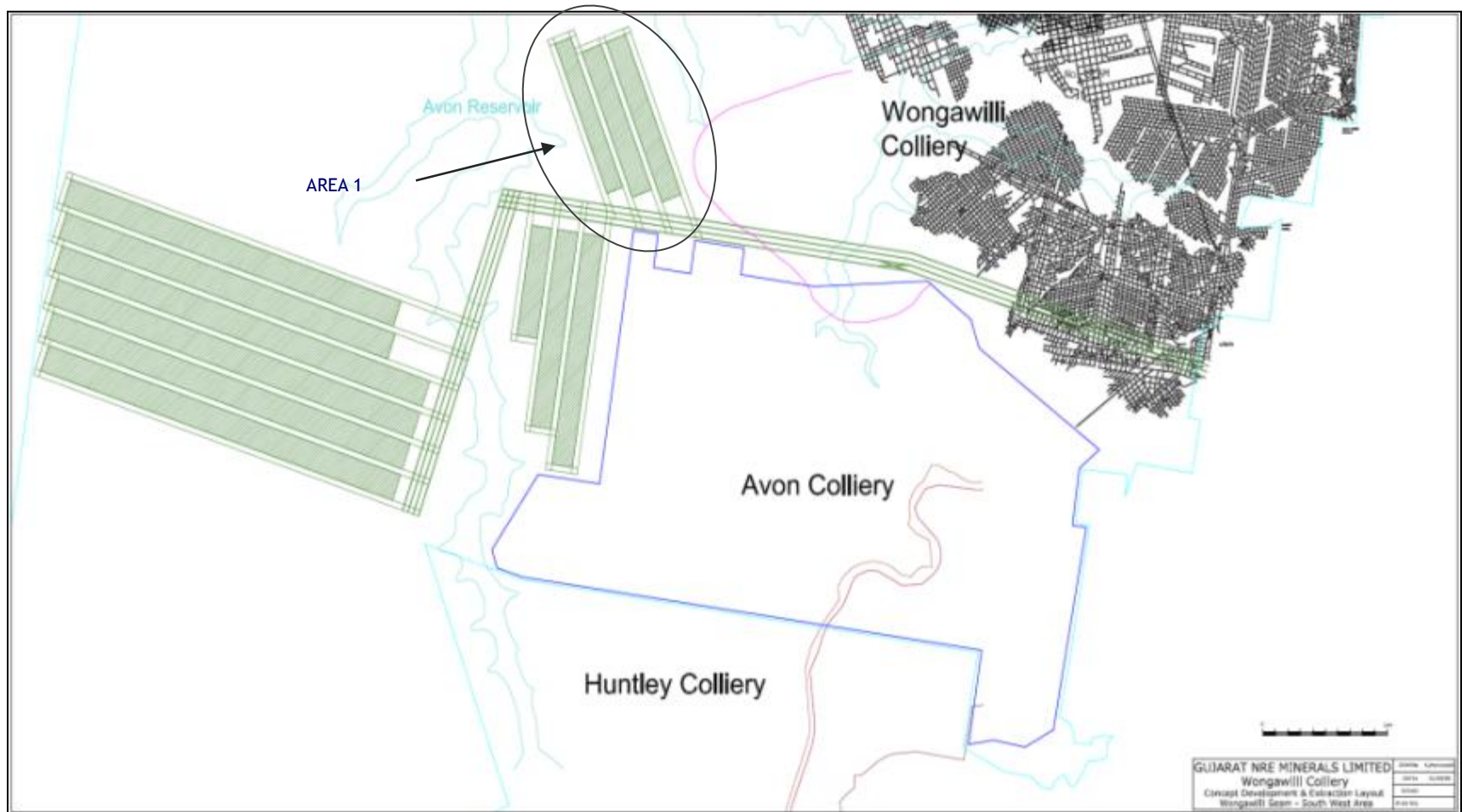
Proposed production areas 2010 to 2021



LEGEND	
WONGAWILLI SEAM LONGWALL EXTRACTION BOUNDARIES	
Yellow	P1N01
Purple	P1N17
Pink	P1N12
Red	P1N18
Blue	P1N15
Cyan	P1N16
Green	P1N14
Yellow-Green	P1N02
Orange	P1N10
Dark Blue	P1N01
Light Green	P1N10

NRE Wongawilli Colliery			
Gujarat NRE FCGL			
Wongawilli Seam Longwall Extraction Boundaries			
Name	Date	Title	Scale
WAD-01-0282	2010-2021	WONGAWILLI SEAM LONGWALLS	1:0
WAD-01-0282			
WAD-01-0282			
WAD-01-0282			

NRE WONGAWILLI COLLIERY - CONCEPTUAL DESIGN



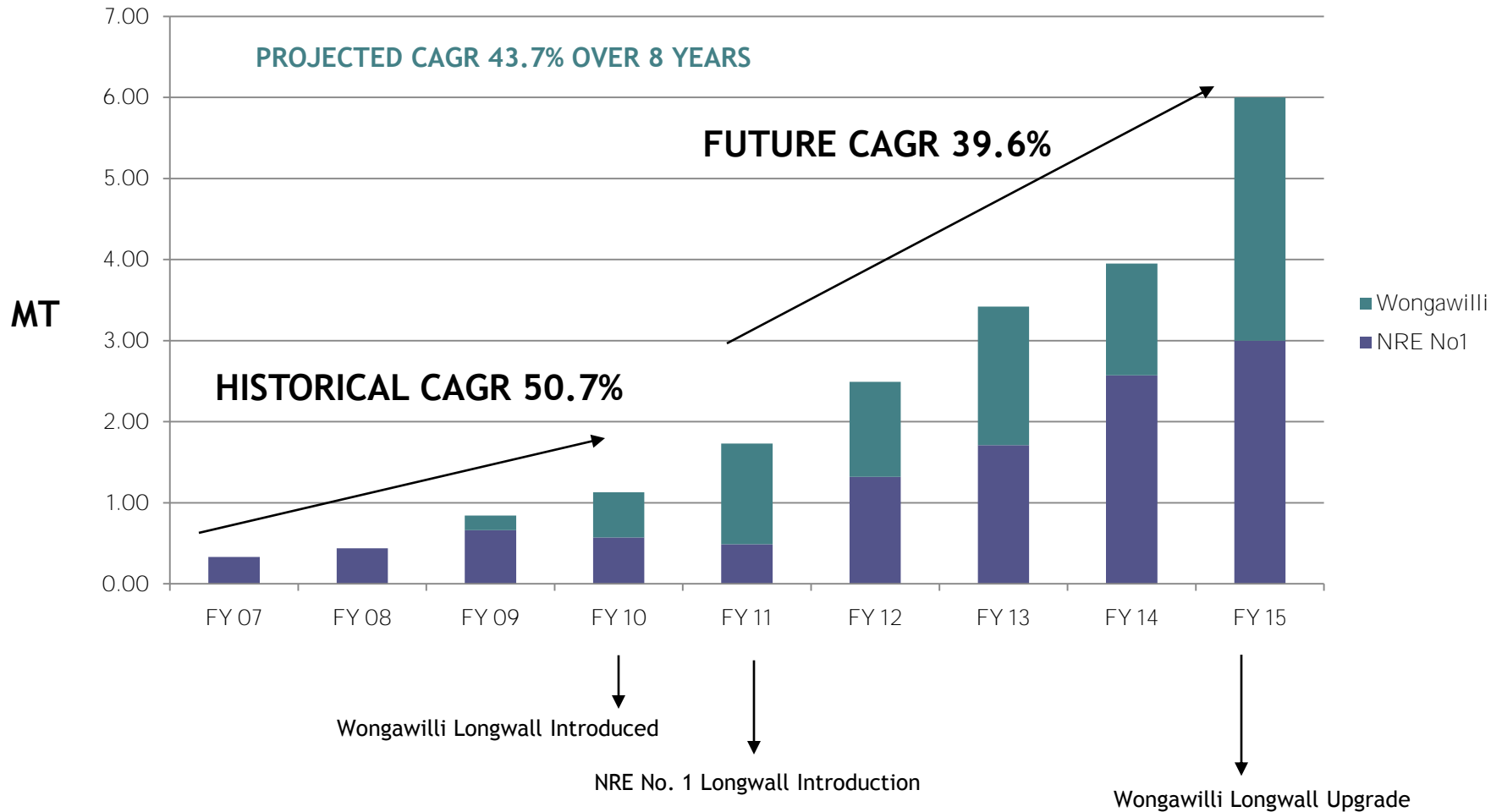
RESERVES & RESOURCES - NRE WONGAWILLI COLLIERY

NRE Wongawilli Colliery

Seam	Resources (Mt)				Reserves (Mt)		
	Measured	Indicated	Inferred	Total	Proven	Probable	Total
Bulli	—	8	28	36	—	5.4	5.4
Wongawilli	48.0	44	106	198	16.5	11.5	28
Tongarra	—	—	103	103	—	—	—
Total	48.0	52	237	337	16.5	16.9	33.4

The Resources and Reserves reported are as prescribed by the “Australasian Code for Reporting of Exploration Results, Mineral Resources and Ore Reserves” (2004 edition, The JORC Code, Clauses 37 to 39) and also using the terminology and the guidelines put forth in the 2003 edition of “Australian Guidelines for Estimating and Reporting of Inventory Coal, Coal Resources and Coal Reserves”. Named Competent Persons consent to the inclusion of material in the form and context in which it appears.

GROWTH PLAN - PRODUCTION FOCUS



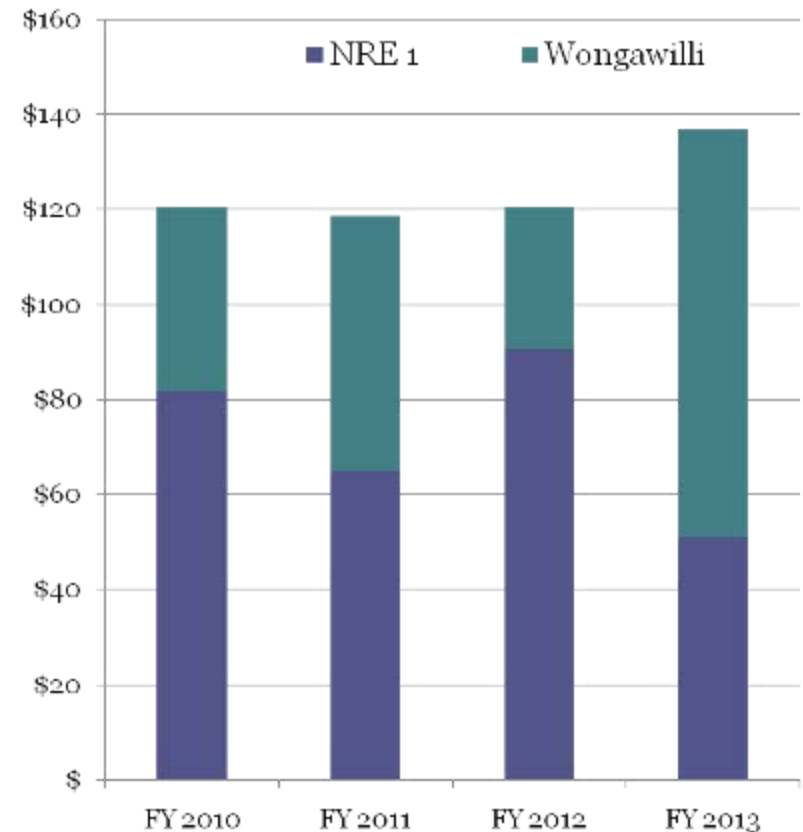
GROWTH PLAN - CAPITAL EXPENDITURE

Current Status : NRE no 1

- Will result in > 4Mtpa capacity mine
- Wonga Mains well advanced
- 4 x New CM's purchased
- New 4,000 tph conveyor commissioned
- Order for new 3,500 tph Joy LW placed
- Contract for upgrade of surface coal handling facilities awarded

Current Status : Wongawilli

- Will result in > 4 Mtpa capacity mine
- Wonga South Portals started
- 2 x New CM's purchased
- Order for Joy LW upgrade placed
- Extended drilling programme developed



GROWTH PLAN - OPEX

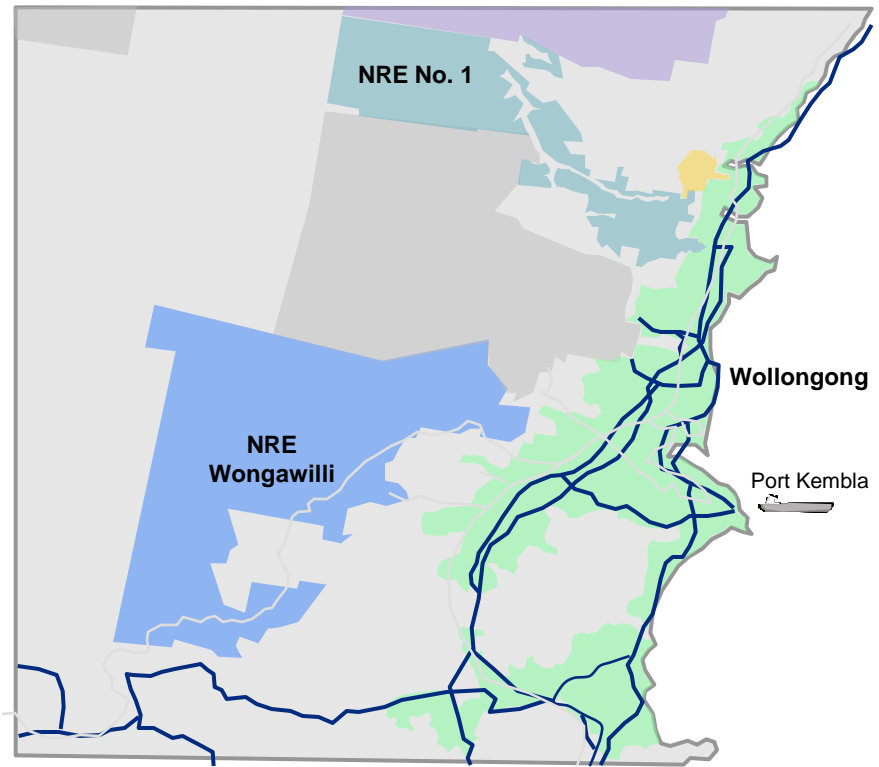
Cash operating costs (pre Royalty) , US \$/t FOB Port Kembla Coal Terminal for ROM coal (pre washing)

- **FY10 - US \$81 /t (NRE no 1 - US \$122/t Board & Pillar, WW - US \$47 /t LW @ 1.5 Mtpa annualised)**
- **FY12-13 - US \$ 47/t (NRE no 1 LW @ 2.0 Mtpa , WW LW @~1.5 Mtpa)**
- **FY15 - US \$39/t (NRE no 1 @ 3 Mtpa , WW LW @ 3 Mtpa)**

EXPORT INFRASTRUCTURE POSITIONING

- Port Kembla Coal Terminal remains an unconstrained coal export port
 - 13.8 Mt throughput in FY 2010
 - ship loading capacity of 17.5 Mtpa being increased to 25 Mtpa
- ROM coal from NRE No.1 is transported via truck haulage to Port Kembla
 - proven ability to transport up to 3 Mtpa
- ROM coal from Wongawilli is transported via rail to Port Kembla
 - historically up to 2 Mtpa has been transported using existing infrastructure
 - the capital program budgets for an infrastructure upgrade that will allow for the transport of 4 Mtpa

Gujarat NRE holds 16% equity in Port Kembla Coal Terminal and a seat on the Board



— Rail
— Road

COAL QUALITY

38

Typical washed coal quality

	Bulli	Wongawilli	Average range for coking coal¹
Ash (%)	9.6	10.0	7.0 - 10.5
CSN (swell index)	5.5	>9.0	6.0 - 9.0
Inherent Moisture (%)	0.8	0.9	1.0²
Volatile Matter (%)	21.7	24.7	17.5 - 34.0
Rank (Ro Max)	1.3	1.2	0.95 - 1.70
Fluidity (ddpm)	1,800	3,000	100 - 20,000
Sulphur (%)	0.38	0.59	0.375 - 0.750
Phosphorous (%)	0.039	0.010	0.005 - 0.080

Source: Australian Coal Association, Company reports, Broker reports

Note:

- 1 Based on Bowen Basin coal quality estimates
- 2 Based on inherent moisture content of Peak Downs coal

Gujarat hard coking coal compares well against Bowen Basin prime hard coking coal on almost all quality parameters

Accolades

Arun: our 2009 Person of the Year



Premier's NSW Export Awards

The Australian Export Awards is a national awards program which recognizes and honors export excellence through innovation and commitment. The Company won **the 2009 Premier's NSW Export Award in Minerals and Energy sector** and became one of the finalists at National level.



PREMIER'S NSW EXPORT AWARDS

Australian Institute of Export

2009 Category Winner: Minerals and Energy

In April 2008, appointed honorary **NSW "Sydney Ambassador" to India** by the Premier of NSW

This year declared as the **"Person of the Year 2009"** by the Illawarra Mercury

THANK YOU

Mr Arun Kumar Jagatramka

Chairman & Managing Director

Gujarat NRE Coke Limited

5th Floor, Block 'C', 22, Camac Street, Kolkata – 700 016

Phone: - +91-33-22891471

Email: arun@gujaratnre.com

www.gujaratnre.com